

# PINEAPPLE TEACAKE

1

Preheat oven to 180°C

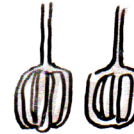
2

100g butter + 3/4 cup sugar

BEAT

3

1 tsp vanilla + 2 eggs



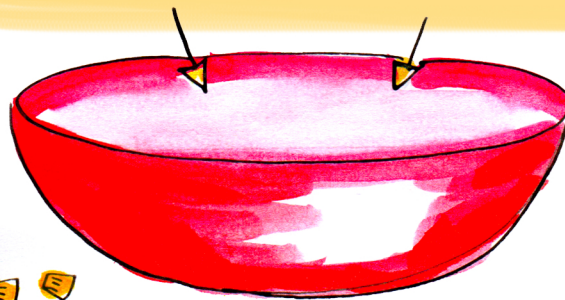
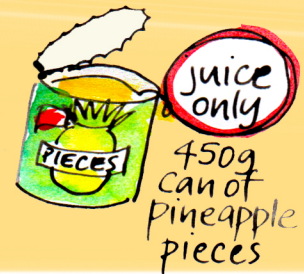
BEAT



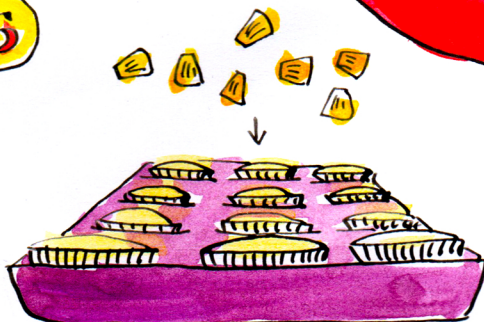
4

3 cups SR Flour

+ 1/2 cup milk

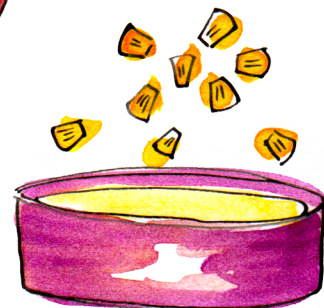


5



Put batter in muffin papers + place pineapple pieces on top.

OR



OR a greased + lined cake tin + place pineapple pieces on top.

BAKE 1 HOUR.

6

BAKE 20-25 MINS

7

Serve warm with butter + cinnamon sugar.



Anna